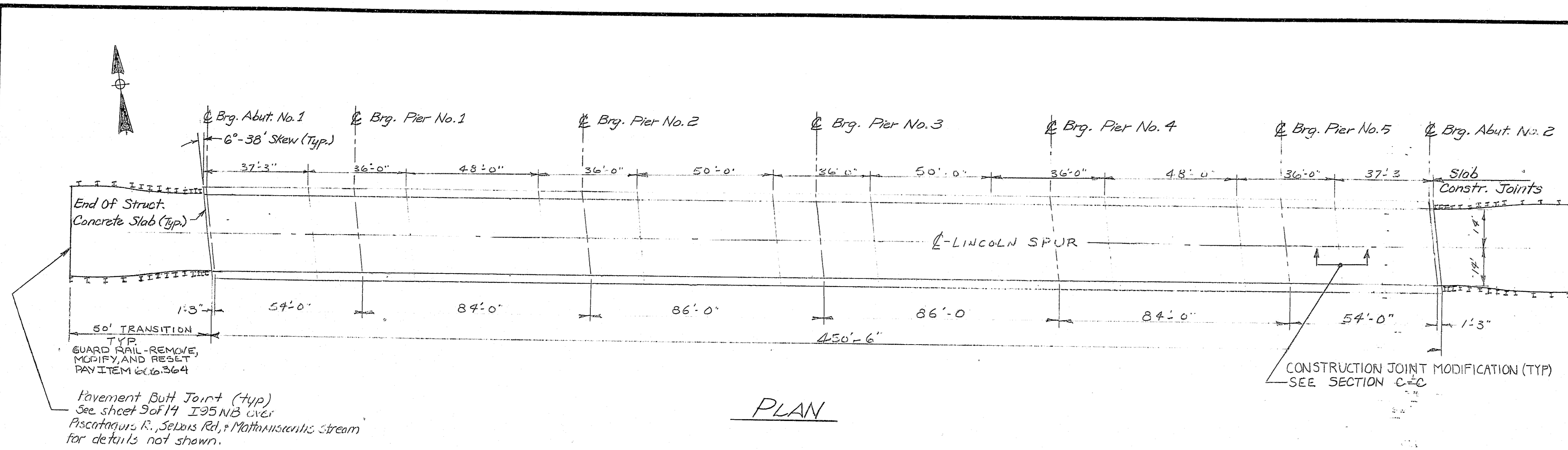
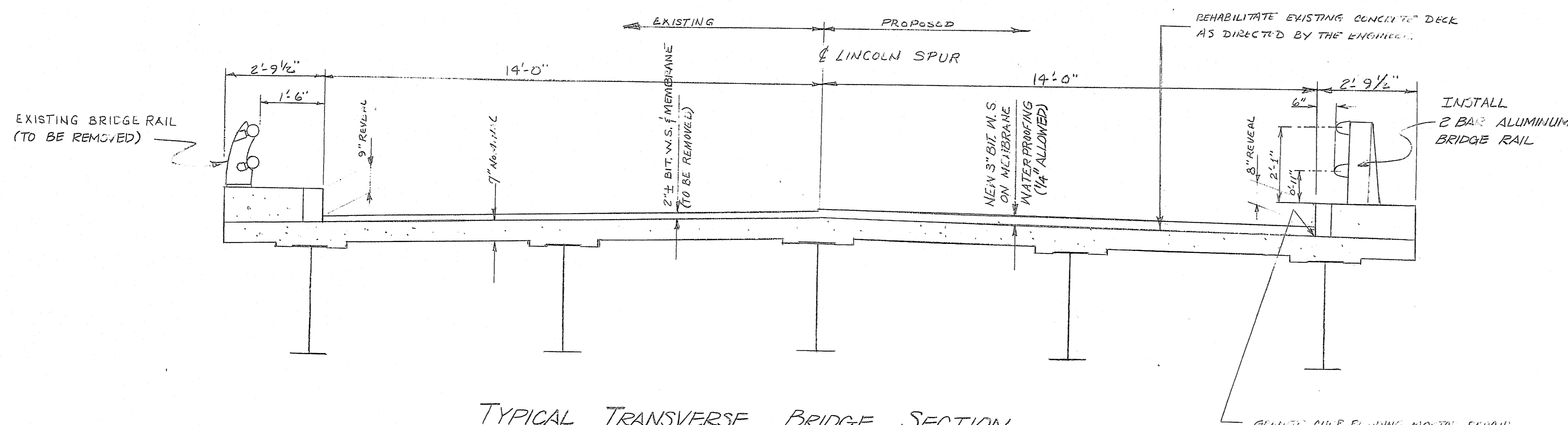


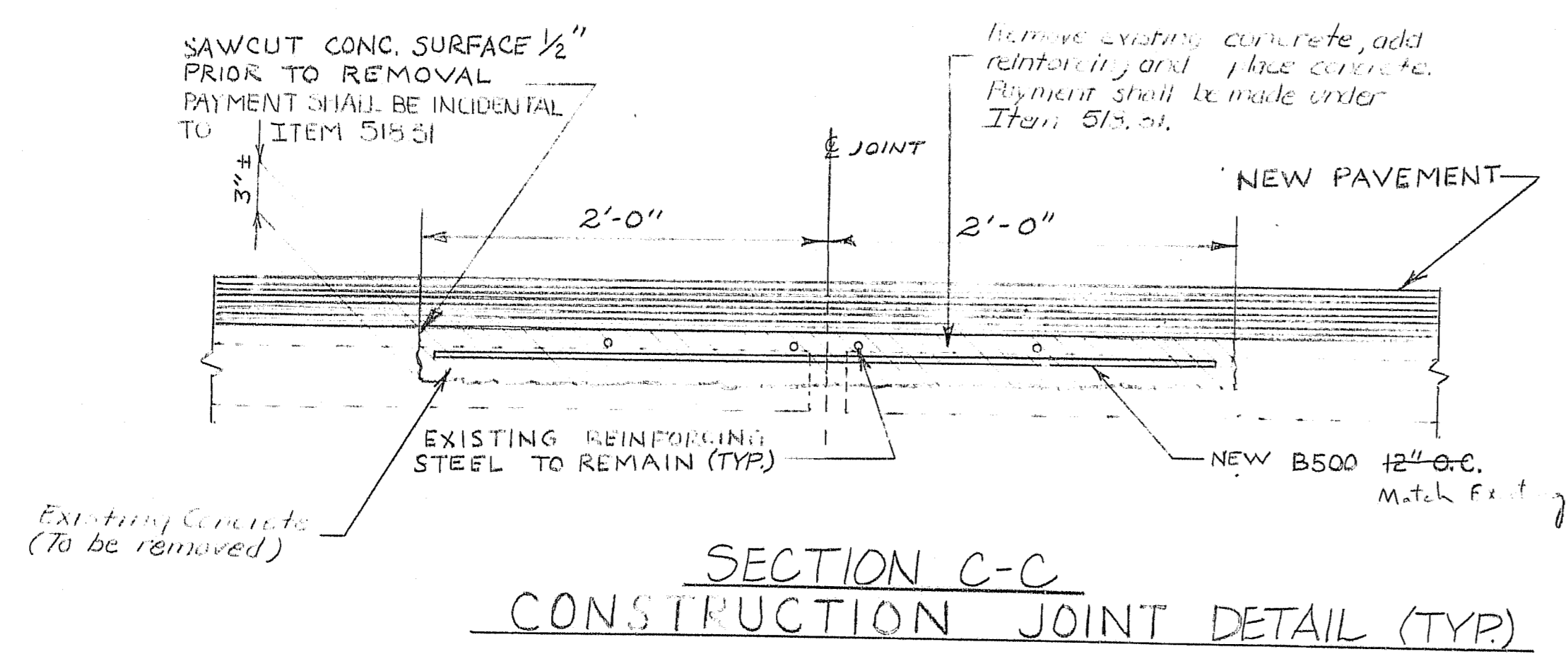
F.H.W.A. REV. NO.	STATE	PROJECT NUMBER	SHEET NO.	TOTAL SHEETS
1	MAINE	1R-11-95-8(147)	10	14
004200.00				



PLAN



TYPICAL TRANSVERSE BRIDGE SECTION



SECTION C-C
CONSTRUCTION JOINT DETAIL (TYP)

SPECIFICATIONS

DESIGN: LOAD FACTOR: DESIGN PER AASHTO STANDARD SPECIFICATIONS FOR HIGHWAY BRIDGES 1983 AND INTERIM SPECIFICATIONS 1990 AND 1991.

CONTRACT: STATE OF MAINE, DEPARTMENT OF TRANSPORTATION, STANDARD SPECIFICATIONS, HIGHWAYS & BRIDGES, REVISION OF OCT. 1990.

SCOPE OF WORK

REPLACE EXISTING BITUMINOUS PAVEMENT WEARING SURFACE AND MEMBRANE WATERPROOFING WITH NEW MEMBRANE WATERPROOFING AND 3" BITUMINOUS PAVEMENT WEARING SURFACE.

REHABILITATE STRUCTURAL CONCRETE SLAB.

REMOVE EXISTING, AND INSTALL NEW BRIDGE RAIL.

REMOVE EXISTING, AND CONSTRUCT NEW STANDARD CONCRETE END POSTS. APPLY PROTECTIVE COATING TO CONCRETE SURFACES. REMOVE, MODIFY, AND RESET EXISTING APPROACH GUARD RAIL.

REMOVE CONCRETE DECK HAUNCHES 3'-0" FROM G. BEARING AT ABUTMENTS. INSTALL SHEAR CONNECTORS (DOUBLE STUDS) ON BEAMS AT ENDS OF DECK SLAB. CONSTRUCT NEW CONCRETE DECK HAUNCHES WITH REINFORCING STEEL. INSTALL NEW JOINT ARMOR, EXPANSION DAMS AND GLAND SEALS.

REHABILITATE SLAB CONSTRUCTION JOINTS.

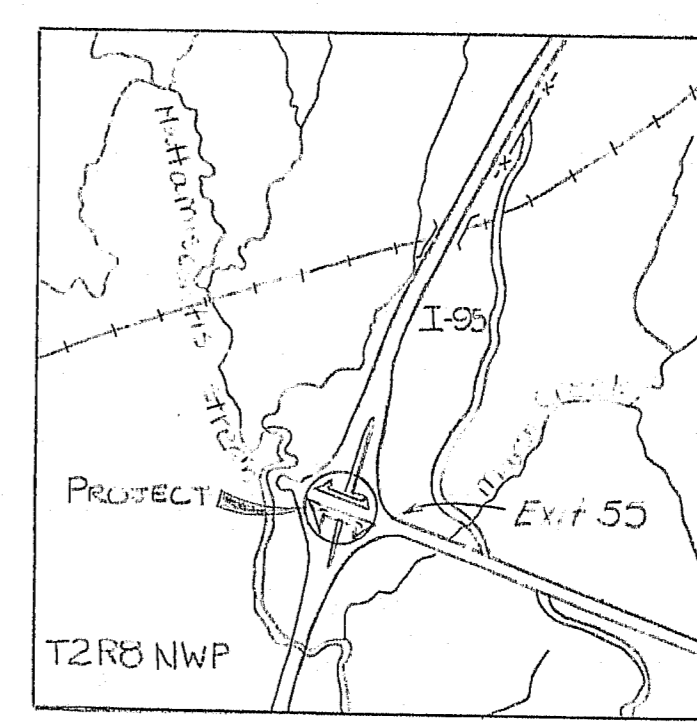
TRANSITION PAVEMENT ON LEADING AND TRAILING ENDS.

MAINTENANCE OF TRAFFIC

MAINTAIN ONE 11'-6" MINIMUM LANE OF TRAFFIC DURING CONSTRUCTION. SEE STAGE CONSTRUCTION DETAILS - SHEET 2

DESIGN LOADING

LIVE LOAD: HS20-44 (EXISTING)



LOCATION MAP

Note: A Bridge Deck Evaluation report of the existing bridge is available for the Contractor's reference at the Bridge Design Office in Augusta. The report contains visual inspection information and deck core data for this bridge. There is no assurance that this information or data is a true representation of the conditions of the entire deck.

Note: The data of the existing bridge are available for the Contractor's reference at the Bridge Design Office in Augusta. The plans are reproductions of design drawings and it is very unlikely that the Plans show any construction field changes or any alterations which may have been made to the bridge during its life span.

TRAFFIC DATA

AADT (1992)	1500
AADT (2012)	2400
DHV-% OF AADT	11
DESIGN HOUR VOLUME	264
% HEAVY TRUCKS (AADT)	21
18 KIP EQUIVALENT P 2.5	279

107-393

Revised As Built 1993 P. Roberts
BRIDGE NO. 6014

STATE OF MAINE
DEPARTMENT OF TRANSPORTATION
LINCOLN SPUR
OVER
IN THE TOWN OF
T2R8 NWP
PENOBSCOT COUNTY
GENERAL PLAN

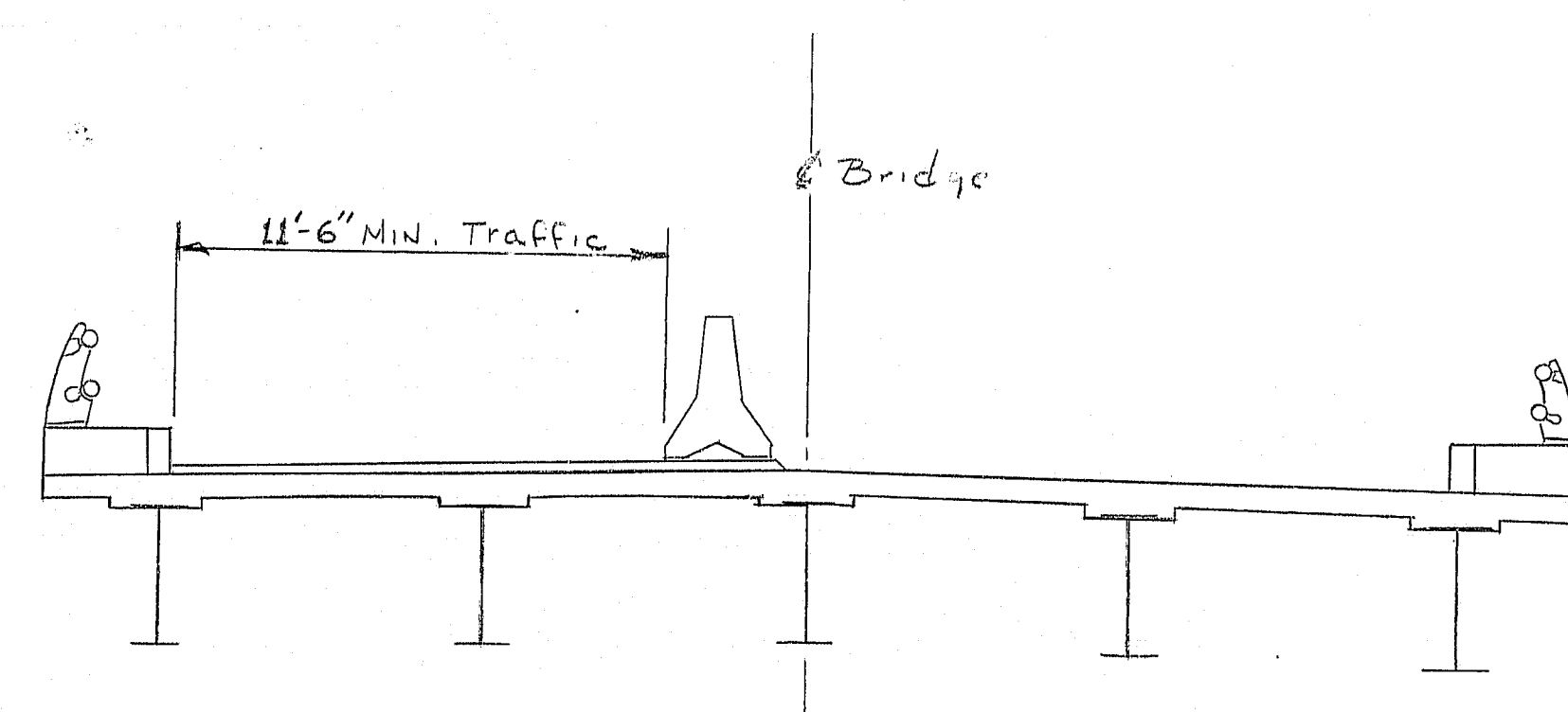
SHEET 10 OF 14 AUGUSTA, MAINE

PROJECT DESIGN ENGINEER	DATE
CHH	2/92
DESIGN - CHECKED	DATE
CHH	2/92
REVISIONS	DATE
CHH	2/92
FIELD CHANGES	DATE
CHH	2/92

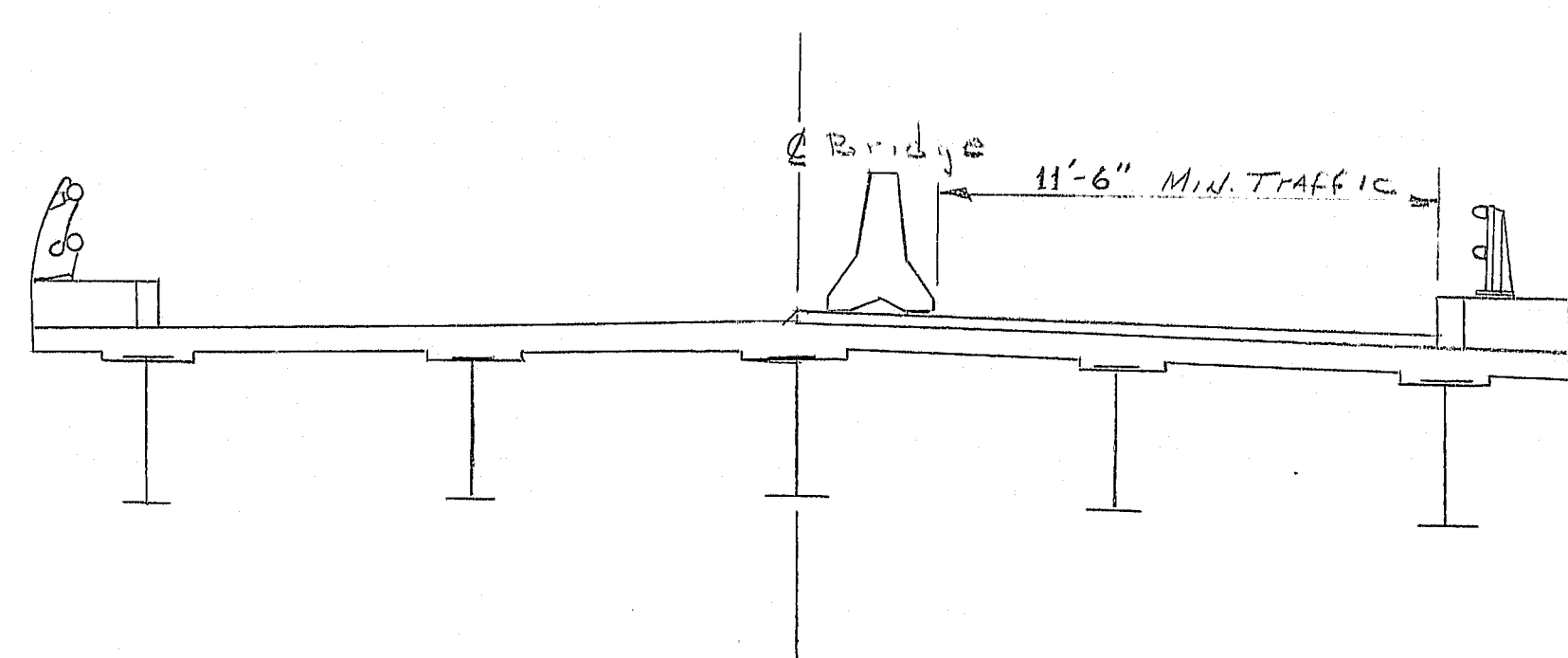
BRIDGE 44-32 6710-1

PROJECT DESIGN ENGINEER	DATE
DESIGN - DETAIL	3/72
CHECKED	5/72
FIELD CHANGES	
PLANS	

BRUNING 44-132 45710-1



STAGE I - REMOVE HALF OF BITUMINOUS CONCRETE PAVEMENT & MEMBRANE. PERFORM ALL REQUIRED REPAIR & REPLACEMENTS NECESSARY BEHIND TEMPORARY BARRIERS. INSTALL MEMBRANE. PAVE CLOSED HALF OF ROADWAY WITH ONE COURSE OF HOT BITUMINOUS PAVEMENT.

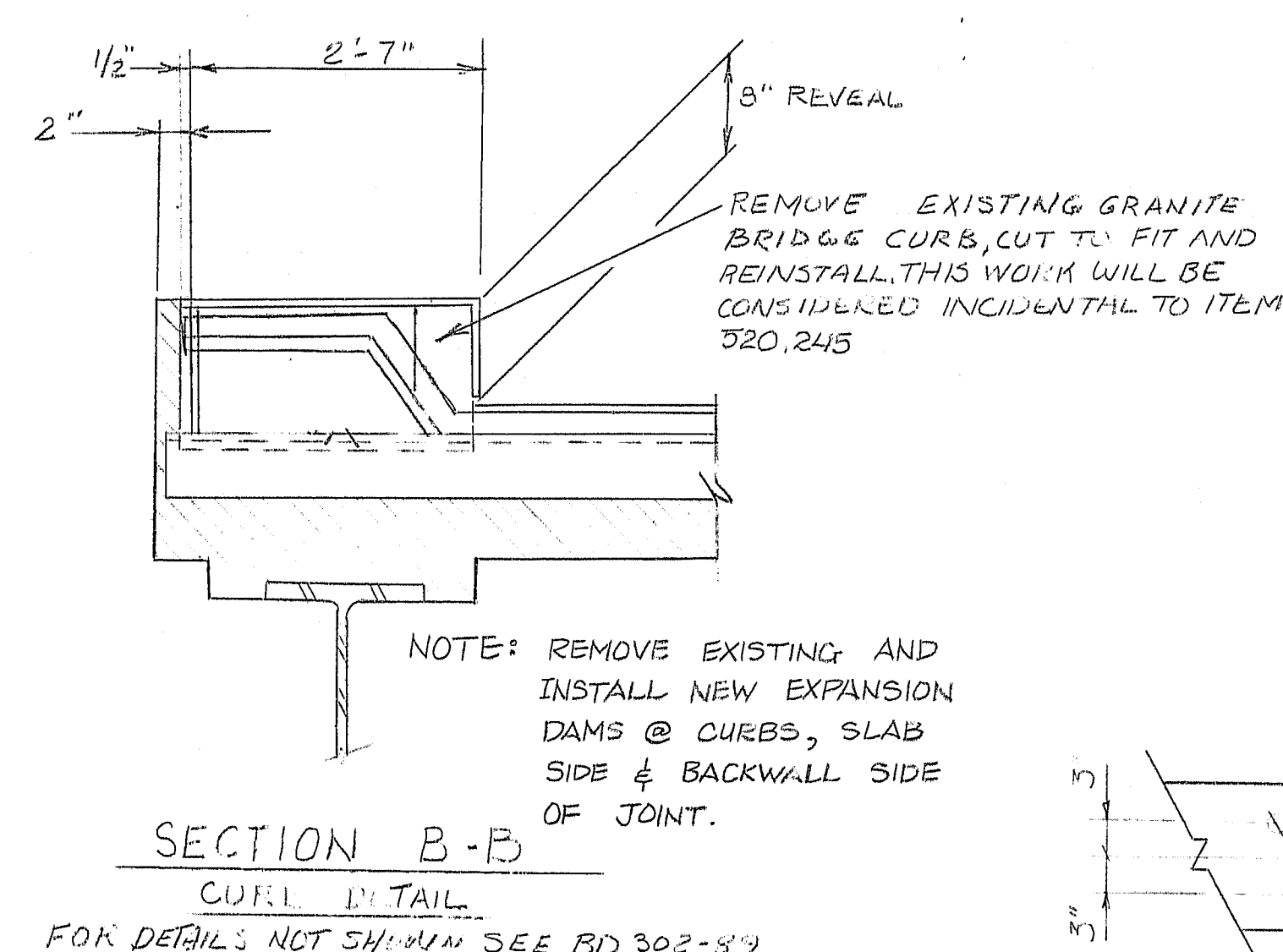
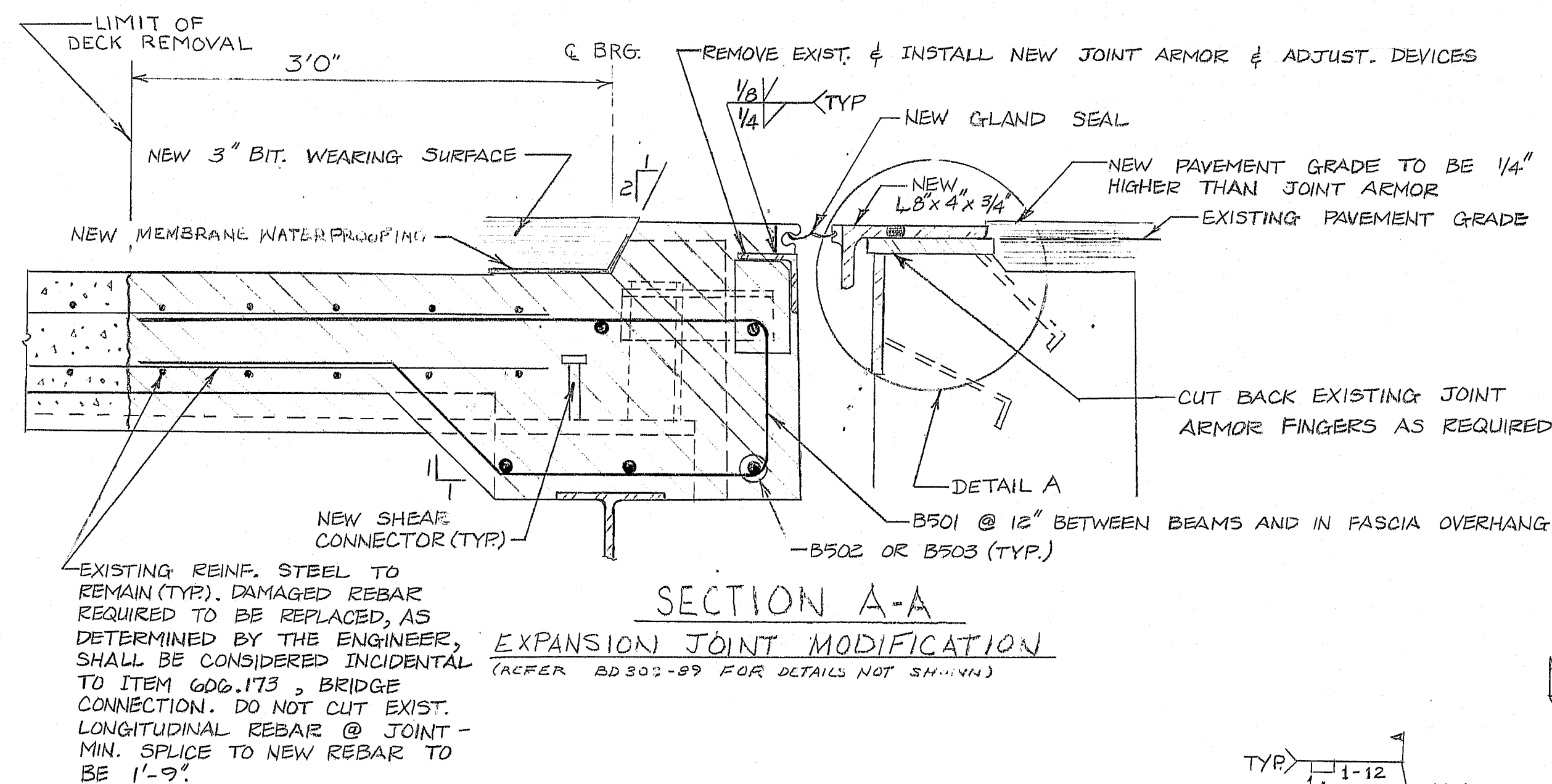
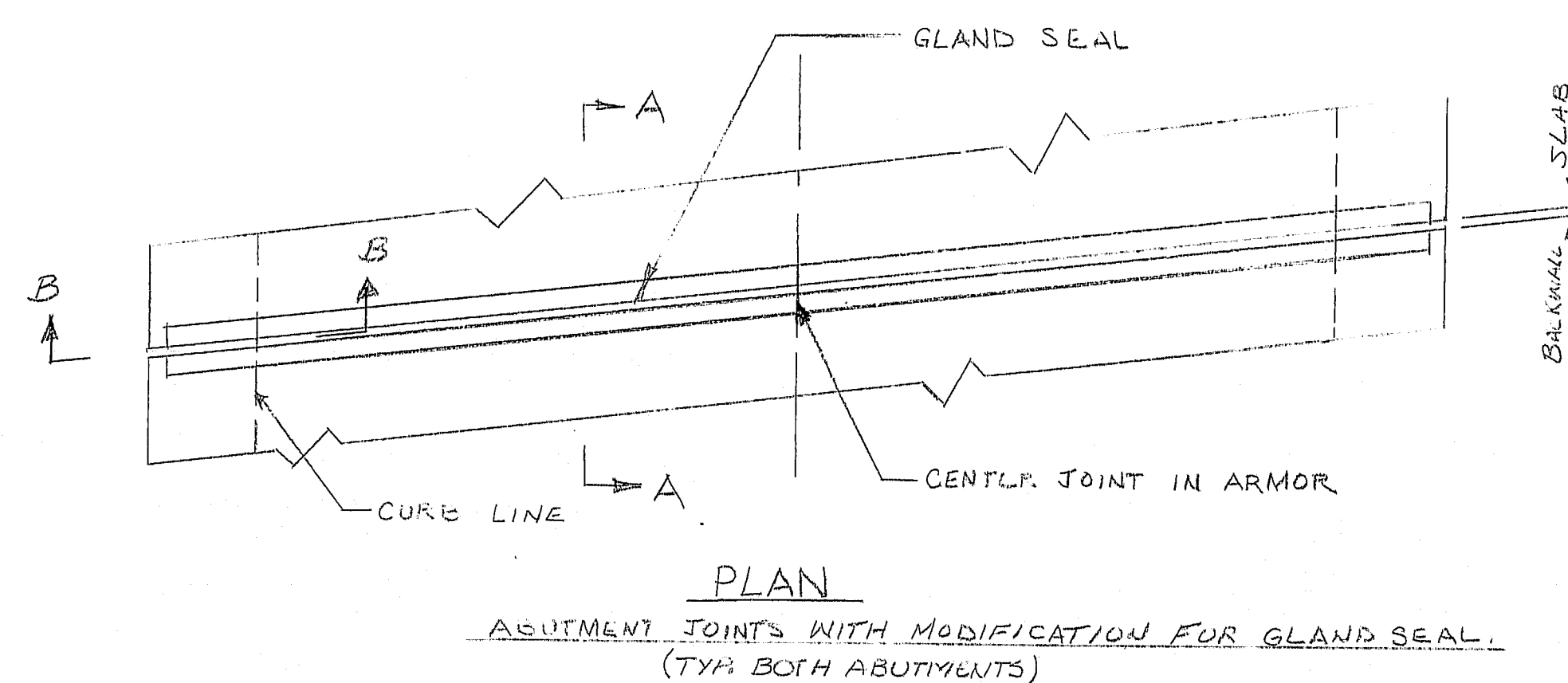


STAGE II - RELOCATE TEMPORARY CONCRETE BARRIER AND REMOVE REMAINING BITUMINOUS CONCRETE PAVEMENT AND MEMBRANE. PERFORM REMAINING NECESSARY REPAIRS AND REPLACEMENTS. INSTALL MEMBRANE. PAVE CLOSED HALF OF ROADWAY WITH ONE COURSE OF HOT BITUMINOUS PAVEMENT.

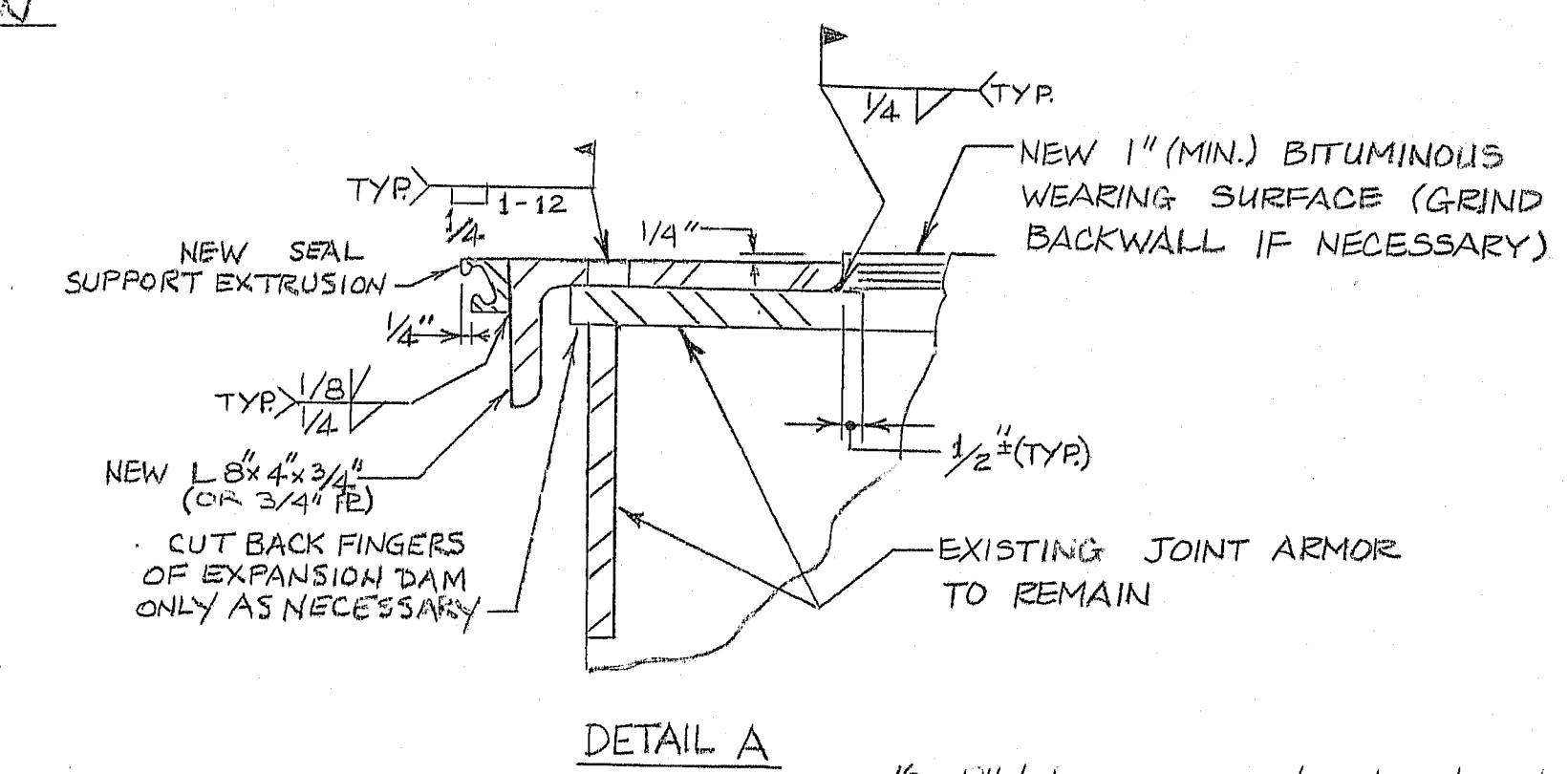
STAGE III - REMOVE TEMPORARY CONCRETE BARRIER. PAVE FINAL COURSE OF HOT BITUMINOUS PAVEMENT AND APPROACH TRANSITIONS IN ONE OPERATION.

NOTE - MAINTAIN A MINIMUM OF ONE SIGNALIZED TRAFFIC LANE AT ALL TIMES.

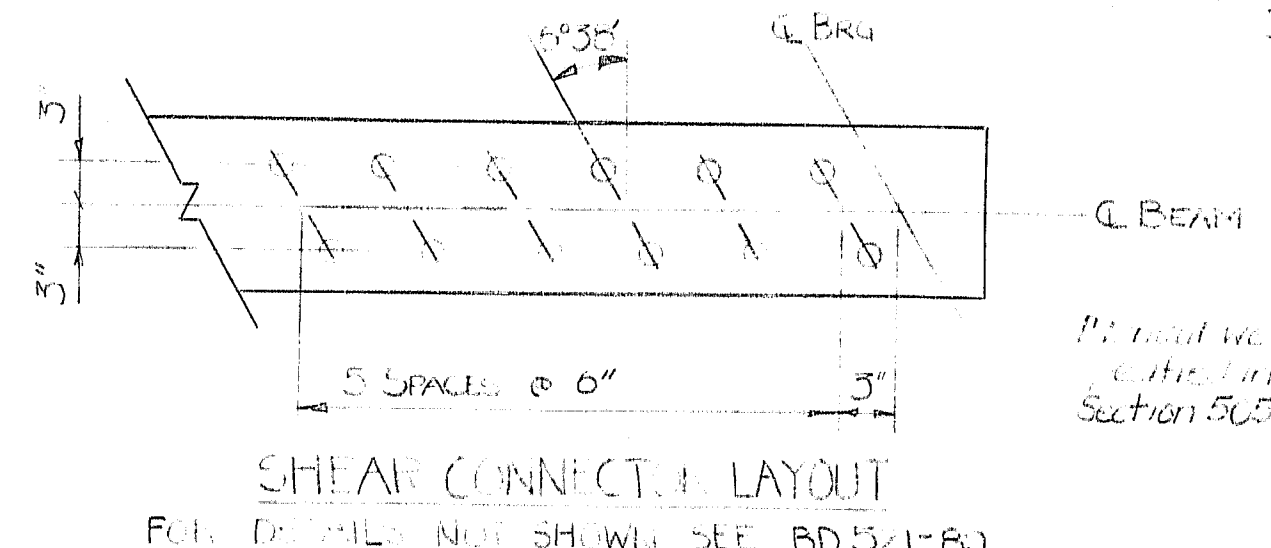
STAGE CONSTRUCTION



SECTION B-B
CURB DETAIL
FOR DETAILS NOT SHOWN SEE BD 502-89



DETAIL A



SHEAR CONNECTOR LAYOUT
FOR DETAILS NOT SHOWN SEE BD 504-89

CONSTRUCTION NOTES

- The top surface of existing concrete slabs shall be repaired as directed by the Engineer in accordance with Supplemental Specification Section 518, Rehabilitation of Structural Concrete Bridge Decks.
- Rehabilitate the concrete deck at slab joints, between the existing curbs, as directed by the Engineer.
- Repair granite bedding mortar in accordance with Special Provision 518, Repairing Granite Curb Bedding Mortar.
- Reinforcing steel shall have 2 inch minimum cover unless otherwise noted.
- Protective coating for concrete surfaces shall be applied to the following areas:
 - all exposed areas of concrete end posts
 - top and fascia of all curbs down to the drip notch
- All work shall be done behind temporary concrete barriers.
- Depress the bituminous wearing surface around the existing bridge drains as directed by the Engineer.
- The gland seals to be furnished shall have a minimum Movement Rating of 2 3/4".
- The seal shall be approved by the Engineer prior to fabrication of the joint armor.
- The joint opening will vary depending on the dimensions of the seal selected by the contractor. The joint opening shall be set according to the opening shown on the approved shop drawings.
- The joint armor shall be installed in two sections which shall allow one lane of traffic over the bridge during construction. The two sections of joint armor are to be welded in the field to produce one continuous section. Two coats of paint will be applied in accordance with Special Provision Section 506, Zinc Hydroxy Phosphate - Code Number ZHP-1.
- The seals shall be installed in one continuous length. Splicing on the seal will not be allowed.
- The existing finger joints shall be modified as shown on the plans.
- MODIFICATIONS TO GUARDRAIL FOR CONFORMANCE WITH STANDARD DETAILS ON BD 201-89, INCLUDING MATERIALS AND LABOR, WILL BE CONSIDERED INCIDENTAL TO ITEM 606.364.
- EXISTING BRIDGE RAIL SHALL BE DELIVERED TO MOOT BRIDGE MAINTENANCE LOT. PAYMENT SHALL BE INCIDENTAL TO ITEM 202.15.

GLAND SETTING TABLE	
TEMPERATURE (°F)	
120	5/8"
105	7/8"
90	1 1/8"
75	1 1/16"
60	1 3/4"
45	2"
30	2 1/4"
15	2 3/16"
0	2 7/8"
-15	3 1/8"
-30	3 3/8"

- All labor, equipment and materials necessary to remove and replace 3' of deck at the end shall be included in Item 520.245 except reinforcing steel, membrane, hot bituminous pavement and shear connectors which shall be paid under the appropriate contract items.
- For details of membrane waterproofing not shown, see BD 521-89.
- Removal of existing guard rail attachments will be paid for under Item 202.17.

STATE OF MAINE
DEPARTMENT OF TRANSPORTATION

LINCOLN SPUR
OVER
INTERSTATE 95
IN THE TOWN OF
T2R8 NWP
PENOBSCOT COUNTY

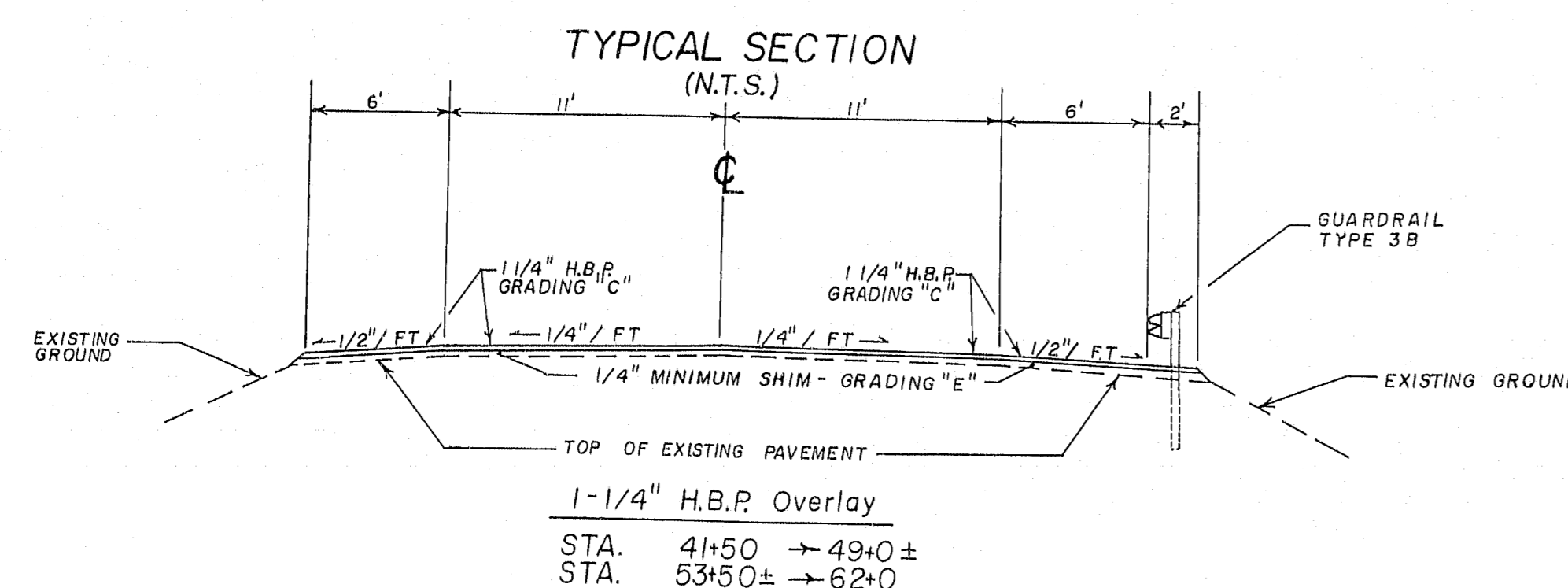
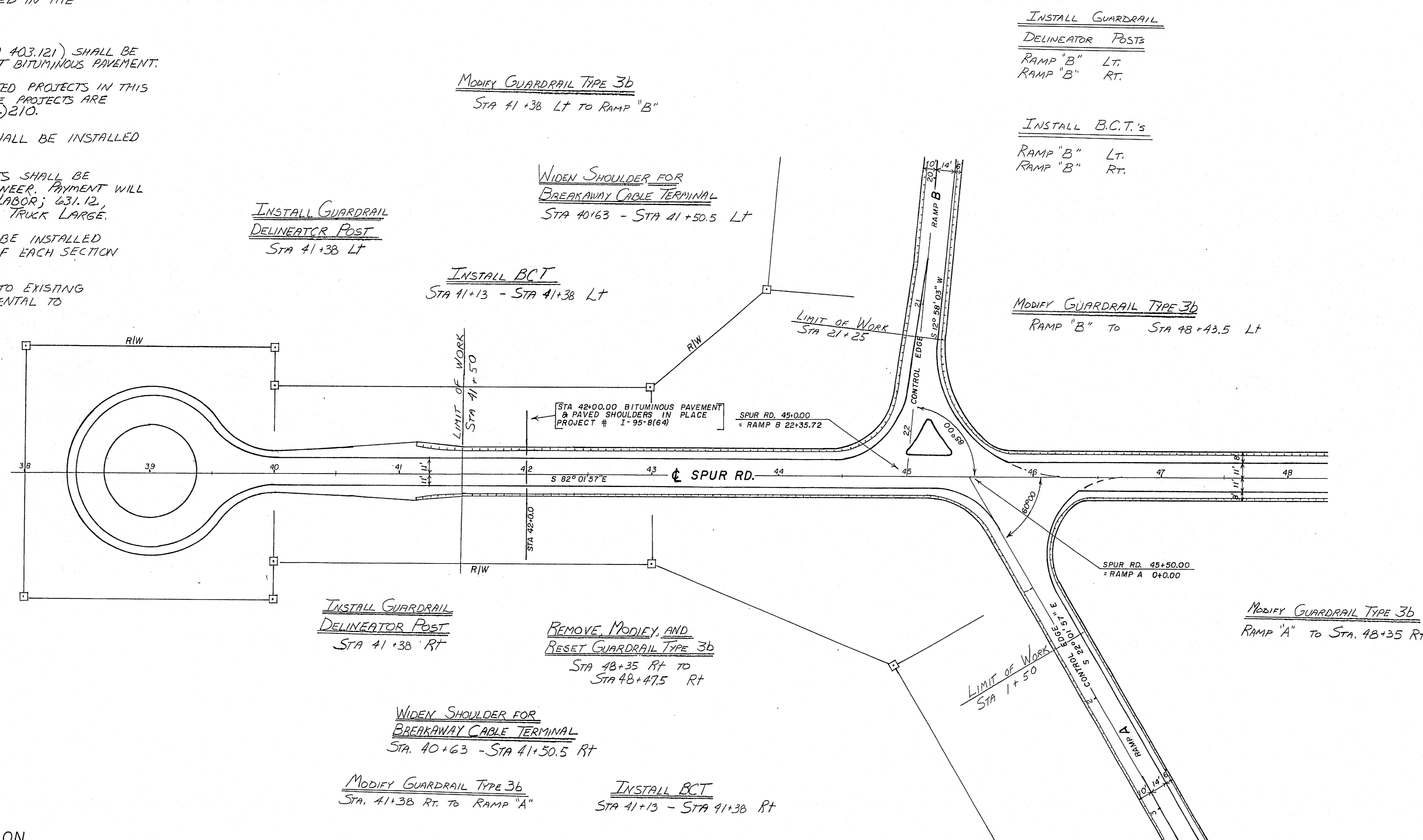
DETAILS

SHEET 11 OF 14 AUGUSTA, MAINE

107-394

GENERAL NOTES

1. NO UTILITY INVOLVEMENT IS ANTICIPATED.
2. ANY EXISTING PAVED SIDE ROADS OR SHOULDERS SHALL BE RESURFACED AS DETERMINED IN THE FIELD BY THE ENGINEER.
3. A VARIABLE DEPTH SHIM COURSE (ITEM 403.121) SHALL BE APPLIED PRIOR TO PLACING THE 1/4" HOT BITUMINOUS PAVEMENT.
4. PLAN SHEETS OF PREVIOUSLY CONSTRUCTED PROJECTS IN THIS AREA ARE AVAILABLE ON REQUEST. THESE PROJECTS ARE IR-95-8(117)204, AND I-95-8(147)210.
5. ONE GUARDRAIL DELINEATOR POST SHALL BE INSTALLED AT EACH GUARDRAIL END.
6. TEMPORARY EROSION CONTROL MEASURES SHALL BE MAINTAINED AS DIRECTED BY THE ENGINEER. PAYMENT WILL BE MADE UNDER ITEMS 629.05, HAND LABOR; 631.12, ALL PURPOSE EXCAVATOR; AND 631.172, TRUCK LARGE.
7. BREAKAWAY CABLE TERMINALS SHALL BE INSTALLED CONCURRENTLY WITH THE PLACEMENT OF EACH SECTION OF BEAM GUARDRAIL.
8. CONNECTIONS FOR PROPOSED GUARDRAIL TO EXISTING GUARDRAIL WILL BE CONSIDERED INCIDENTAL TO ITEM 606.
9. ALL EXCESS GUARDRAIL SHALL BE THE PROPERTY OF THE STATE AND WILL BE STOCKPILED AT THE WEST ENFIELD MAINTENANCE LOT LOCATED ON U.S. ROUTE 2, ABOUT 0.5 MILES SOUTH OF THE JUNCTION OF U.S. ROUTE 2 AND ROUTE 155. NO SEPARATE PAYMENT WILL BE MADE FOR REMOVAL AND STOCKPILING.



REVISED "AS BUILT" 1993 D. GAYNE
107-395

STATE OF MAINE
DEPARTMENT OF TRANSPORTATION

T2R8 95
IR-IM-95-8(147)

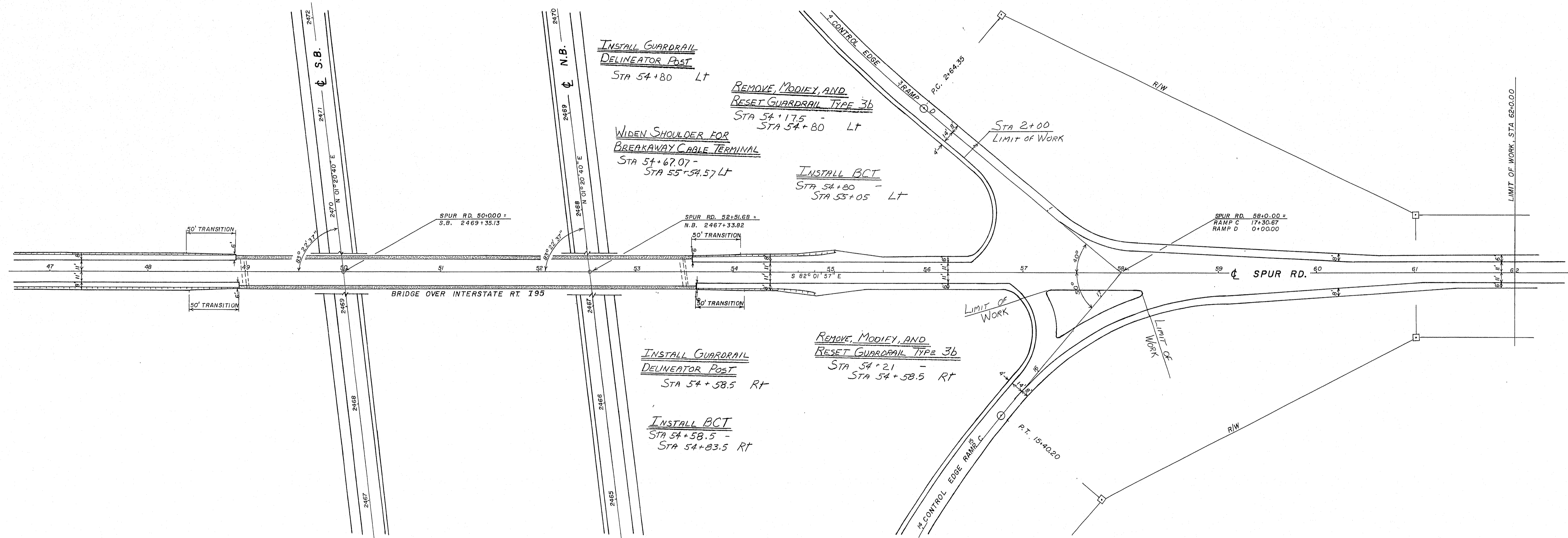
50' 0 50' 100'

SHEET 13 OF 14 AUGUSTA, MAINE

PROJECT DESIGN ENGINEER	DATE
DESIGN-DETAILED	95
CHECKED	
REVISIONS	
FIELD CHANGES	
PLANS	

F.R.W.A. REQ. NO.	STATE	PROJECT NUMBER	SHEET NO.	TOTAL SHEETS
1	MAINE	IR-IM-95-8(147)	14	14

T2R8



PROJECT DESIGN ENGINEER	BY	DATE
DESIGN - DETAILED	L. Sheehan	95
CHECKED		
REVISIONS		
FIELD CHANGES		

REVISED "AS BUILT" 1993 D. GAYNE
107-396

STATE OF MAINE
DEPARTMENT OF TRANSPORTATION

T2R8 96
IR-IM-95-8(147)

50' 0 50' 100'
SHEET 14 OF 14 AUGUSTA, MAINE